



**PST**

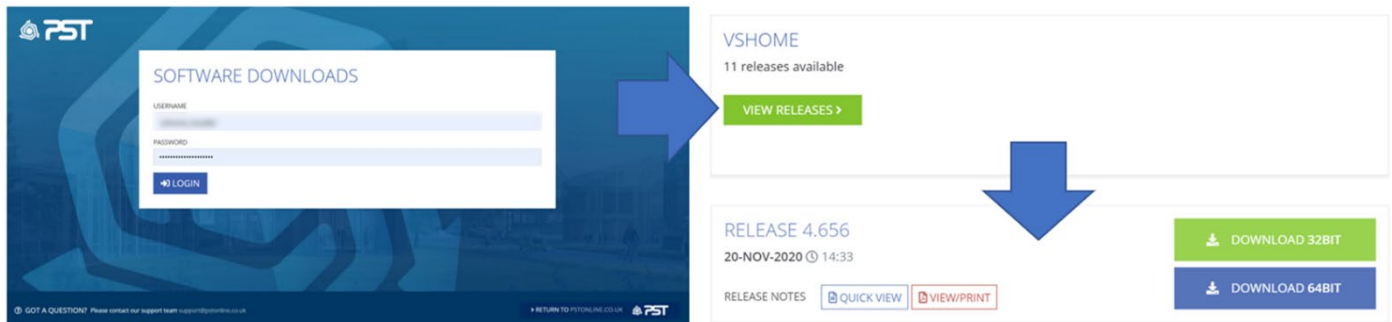
DESIGN WITHOUT LIMITS

# Advanced Software Solutions for the Glazing & Home Improvement Industry

vsHome installation and setup guide

## Installation and setup guide

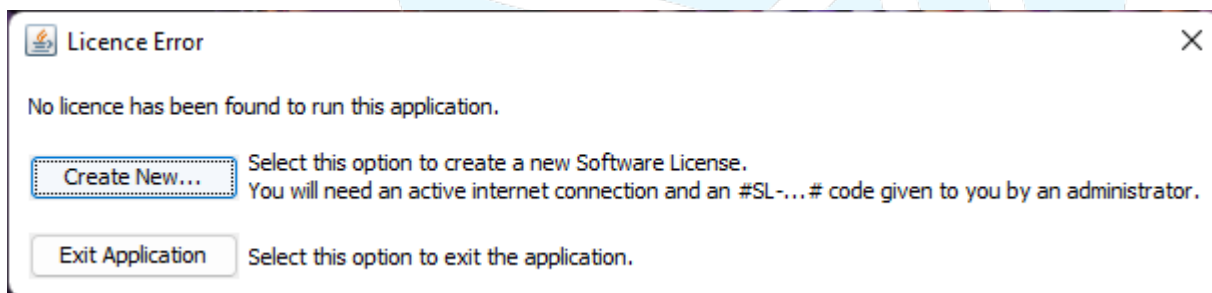
To get started with vsHome you will need to download the software from our downloads portal (<https://updates.pstonline.co.uk>). In order to access the site you will need a login and password, that is provided to you when you initially request a free trial. We advise that you do not lose these login details as when the software is updated you will need to login to the portal to download the latest version.



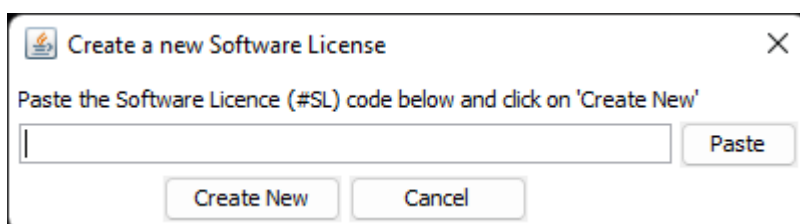
Once the installer has downloaded, run it and the setup wizard will install the software. Follow the instructions, and once installed launch the software.

## Setting up a licence

Once installed you will need to activate your licence.



Click on 'Create New' and enter your licence code into the dialogue box that pops up.



If you are on a free trial then your licence code will be provided to you in your setup email. If you have finished your trial and purchased the software then this step should only be necessary if you have reallocated your licence on the Purchase Portal. If this is the case, the portal will tell you the code.

Once this has been done vsHome will launch to the homepage.

